



For Earth, For Life  
Kubota

L

## KUBOTA DIESEL TRACTOR L2501

With the power to tackle a wide range of jobs, Kubota's New L2501 combines robust performance and user-friendly features in one easy-to-operate compact tractor.



# Powerful enough to tackle a wide range yet nimble enough to provide the precision

## ENGINE



### Powerful, clean running Kubota diesel engines

Kubota engines are well known for their reliability, power, and ability to generate outstanding horsepower. Today, Kubota engines are more fuel efficient and clean running than ever before. The 24.8 HP (18.5kW) engine in the L2501 meets the very latest EPA Tier 4 Final emission regulations. And, maintenance is easier with a gas-strut hood opener-assist.

## COMFORT



### Enhanced operator's deck

The L2501 features a spacious operator's platform for optimal comfort. The ergonomic design means that the operator experiences less fatigue. The semi-flat design of the deck makes mounting and dismounting the tractor easier.

### Select HST Transmission with 4WD or Gear Drive in 2WD or 4WD

The transmission delivers smooth operation with 4 main-shift speeds in two ranges (Hi/Lo) for a total of 8 forward and 4 reverse speeds. Choose either 2WD or 4WD to best suit your needs. The optional HST transmission offers simple forward and reverse change and 3-range shifting for optimal operating efficiency. Optional cruise control is also available on HST models.



# of tasks, ion performance you need.



## VERSATILE APPLICATION

### Performance Matched Implements

- LA525 Front Loader  
Maximum lift capacity (pivot pin) is 1131 lbs, with a maximum lift height of 94.3".
- BH77 Backhoe
- Rear Rotary Cutter max. cutting width 60"
- Rear Snow Blower
- Rotary Tiller, Rear Blade, and more

### 2-lever-quick Coupler

The quick coupler is simple to use. Quick, easy on/off buckets and other attachments require no tools, only mounting pins and hose couplers, allowing you to move onto the next task in a matter of minutes.



# Specifications

Model			L2501				
			Gear-Drive Transmission		HST		
			2WD	4WD	4WD		
<b>Engine</b>			Direct injection, Vertical, Water-Cooled 4 cycle diesel				
Type							
Engine gross power*	HP (kW)			24.8 (18.5)			
Engine net power**	HP (kW)			23.9 (17.8)			
PTO power	HP (kW)	20.5 (15.3)		19.0 (14.2)			
No. of cylinders			3				
Bore & stroke	in. (mm)			3.4 × 3.6 (87 × 92.4)			
Total displacement	cu. in. (cm <sup>3</sup> )			100.47 (1647)			
Rated speed	rpm			2200			
Battery			12V, RC: 123 min, CCA: 490 A				
Alternator			12V, 40A				
Fuel tank capacity	US gal. (ℓ)			10.0 (38.0)			
<b>PTO</b>							
Rear PTO type			Transmission driven with overrunning clutch		Live-continuous running		
PTO/Engine speed	rpm			540/1910			
<b>Hydraulic</b>							
Lift control type			Position control				
Pump capacity (main)	gpm (ℓ/min)			5.15 (19.5)			
(PS)	gpm (ℓ/min)			3.13 (11.8)			
3-point hitch			Category I				
Lift capacity at lift points	lbs. (kg)			1918 (870)			
24 in. behind lift points	lbs. (kg)			1389 (630)			
System pressure	PSI (MPa)			2205 (15.2)			
<b>Travelling System</b>							
Transmission			Gear shift, 8 forward and 4 reverse		Hydrostatic transmission, 3 range speed		
Steering			Integral type power steering				
Brake			Wet disc type				
Clutch			Dry type single stage				
<b>Tire size</b>	AG Standard	Front/Rear	5 - 15/11.2 - 24		7.2 - 16/11.2 - 24		
	Indust. Option	Front/Rear	N / A		27 × 8.50 - 15/15 - 19.5 R4		
<b>Traveling speed with standard AG tires</b>	mph (km/h)			Forward 0.9 (1.4) - 10.7 (17.3) Reverse 1.2 (1.9) - 3.9 (6.2)		Forward 0 (0.0) - 11.5 (18.5) Reverse 0 (0.0) - 10.3 (16.6)	
<b>Dimensions</b>							
Overall length (w/o 3P)	in. (mm)	110.6 (2810)		106.3 (2700)			
Overall width (min. tread)	in. (mm)			55.1 (1400)			
Overall height (w/Foldable ROPS)	in. (mm)			91.7 (2330)			
Wheelbase	in. (mm)			63.3 (1610)			
Min. ground clearance	in. (mm)	13.6 (345)		13.4 (340)			
Tread							
Front tire	in. (mm)	41.3 (1050)		43.1 (1095)			
Rear tire	in. (mm)			43.8 (1115) / 47.1 (1195) / 50.8 (1290)			
Min. turning radius (w/brake, 4WD disengaged)	feet (m)	7.9 (2.4)		8.2 (2.5)			
<b>Weight (with ROPS)</b>	lbs. (kg)	2425 (1100)		2601 (1180)		2623 (1190)	

\* SAE J1995

\*\* SAE J1349

The company reserves the right to change the above specifications without notice. This brochure is for descriptive purposes only. Please contact your local Kubota dealer for warranty information. For your safety, KUBOTA strongly recommends the use of a Rollover Protective Structure (ROPS) and seat belt in almost all applications.

©2014 Kubota Corporation



## KUBOTA TRACTOR CORPORATION

Kubota Tractor Corporation, 3401 Del Amo Boulevard, Torrance CA 90503  
 Western Division: 1175 S. Guild Ave., Lodi, CA 95240 Tel (209) 334-9910  
 Central Division: 14855 FAA Boulevard, Fort Worth, TX 76155 Tel (817) 571-0900  
 Northern Division: 6300 at One Kubota Way, Groveport, OH 43125 Tel (614) 835-1100  
 Southeast Division: 1025 Northbrook Parkway, Suwanee, GA 30024 Tel (770) 995-8855

Visit our web site at: [www.kubota.com](http://www.kubota.com)





For Earth, For Life  
**Kubota**

**L**

## KUBOTA DIESEL TRACTOR L3301/L3901/L4701

More power, cleaner emissions and a bold new look put the new Standard L-Series tractors at the top of their class.



# STANDARD L

**From power to performance, the new Standard L-Series tractors offer all the features you need to get the job done, and get it done right.**

Introducing Kubota's Standard L-Series tractors, providing high performance, outstanding durability, easier operations and enhanced comfort. The Standard L-Series not only have improved performance, but also feature a revamped design with smooth, rounded contours from front to rear that improve visibility so you can get the job done easier and faster. Add to that, Kubota's "Performance Matched" front loaders and backhoes that simplify even the toughest tasks. Get the job done with ease and in comfort with Kubota Standard L-Series tractors.

**ASSEMBLED  
IN  
GEORGIA**



**L3301**

**4WD HST MODEL  
2WD/4WD GEAR MODELS**

**STANDARD L-SERIES  
LINE UP**

**L3901**

**4WD HST MODEL  
2WD/4WD GEAR MODELS**

**L4701**

**4WD HST MODEL  
2WD/4WD GEAR MODELS**

# L3301/L3901/L4701

## ENGINE



### New Powerful, Quiet and Clean Engine

Known for their reliability and power, Kubota diesel engines generate outstanding horsepower, yet are more fuel-efficient and cleaner burning thanks to the Common Rail System (CRS) with electronic controlled direct fuel injection. The engines comply with the latest EPA Tier 4 final emission regulations.

<b>L3301</b>	Gear-drive model (2WD/4WD)	33.0 Engine hp
	HST model (4WD)	33.0 Engine hp
<b>L3901</b>	Gear-drive model (2WD/4WD)	37.5 Engine hp
	HST model (4WD)	37.5 Engine hp
<b>L4701</b>	Gear-drive model (2WD/4WD)	47.3 Engine hp
	HST model (4WD)	47.3 Engine hp

# L3301/L3901

## HST TRANSMISSION

*With more horsepower than ever, the L3301 and L3901 tractors will take you to a higher level of performance.*

### HYDROSTATIC TRANSMISSION

HST provides infinite speed control with HST pedal that can be operated simply by pressing down on the pedal. The more the pedal is pressed, the faster the wheels go. An inline shifting pattern enables easy range shifting between low, medium and high. The shift lever is conveniently located on the left side of the operator's seat for easy operation.

#### Cruise Control (Optional)

The cruise control lever is conveniently located on the left side of the operator's seat for easy access. Simpler than button and pedal combination systems, our lever lets you select and maintain the right travel speed to help reduce operator fatigue. When the cruise control is set, just press the HST pedal to override the speed, and the tractor resumes the preset speed when the foot is removed.



*HST Pedal*



*Range Shift Lever and Cruise Control*

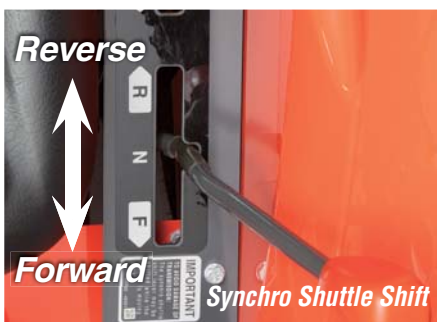


*Main Shift Lever*

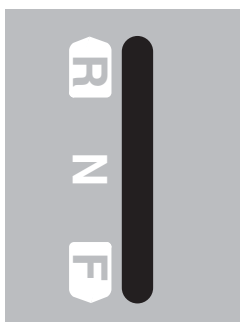
### GEAR-DRIVE TRANSMISSION

**Power and Versatility Means Getting the Job Done Faster.**

You'll finish the big jobs easily with the mechanical Synchro-Shuttle transmission featuring inline forward and reverse shifting for quick directional changes. The transmission offers 8 forward and 8 reverse speeds (8F/8R), enabling you to select the right speed for better productivity.



*Synchro Shuttle Shift*





# L3301/L3901

## EASY OPERATION

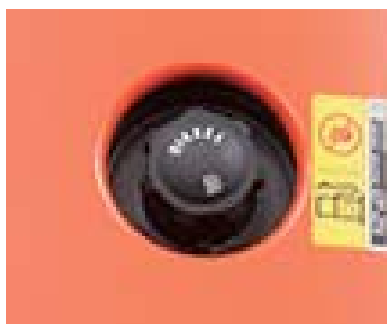


### PTO

The L3301/L3901 HST models and the L3901 gear-drive model include a live, continuous-running rear PTO for easier operation. The HST models also feature an over-running clutch on the PTO shaft to protect the transmission. Finally, a stationary PTO feature allows the use of various implements, such as pumps.

### Conveniently Located PTO Lever

To further enhance access and entry/exit, the PTO lever is located on the right side of the operator's seat (HST models), or to the right side of the foot platform center cover (gear-drive models).



### 3-Point Hitch

The large capacity hydraulic pump and cylinder provide powerful lifting capacity, allowing you to use a wider range of implements.

### Large Capacity Fuel Tank

An ample 11.1 gallon fuel tank lets you operate longer between fill ups.

# L4701

## HST TRANSMISSION



*The L4701's power and smooth operation let you tackle tough jobs with confidence.*

## HYDROSTATIC TRANSMISSION

**Feather-Step HST**  
(Hydraulic servo mechanism)

Kubota's 44.5cc Feather-Step HST features a hydraulic servo system that increases pedal responsiveness, providing easy pedal-shifting operation for smoother performance and improved control, regardless of load size. Now, forward and reverse directional changes are easier. The HST also reduces shock, vibration, noise and fatigue to improve tractor performance and operator comfort. Plus, it features a hand-operated, step-less cruise control, which keeps your working speed constant.

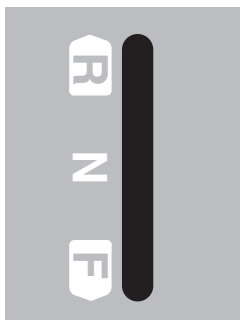
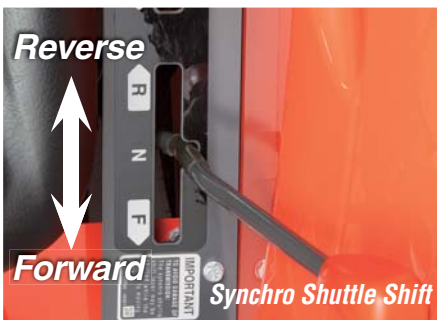
### Cruise Control

The cruise control lever is conveniently located on the left side of the operator's seat for easy access. Simpler than button and pedal combination systems, our lever lets you select and maintain the right travel speed to help reduce operator fatigue. When the cruise control is set, just press the HST pedal to override the speed, and the tractor resumes the preset speed when the foot is removed.

## GEAR-DRIVE TRANSMISSION

### 8x8 Synchro Shuttle Transmission

This transmission offers 8 forward and 8 reverse speeds (8F/8R), enabling you to select the right speed for higher productivity. Furthermore, the Synchro-Shuttle shift lever is conveniently located at the left side of the seat allowing you to quickly and easily switch between forward and reverse. It's particularly handy when performing tasks that require repetitive forward/reverse motions, like front loader work.



# L4701

## EASY OPERATION



### Long Wheelbase

The L4701 maximizes both power and stability, thanks to its long wheelbase (4WD: 72.6-inch, 2WD: 72.8-inch).



### User-Friendly Hydraulic Independent PTO & 3-Point Hitch with Position Control

This convenient feature lets you operate the hydraulic independent PTO without using a clutch. Engaging and disengaging the PTO is simple. Other features include a flip-up type PTO shield, top link holder, and telescopic stabilizers.



### Electric over Hydraulic PTO Switch

Our PTO switch makes PTO operation easier than ever. The switch is conveniently located on the right side of the operator seat. Just a push and turn starts the PTO, and a single push stops it.

### Large Capacity Fuel Tank

You'll spend more time working and less time refueling with our large capacity 13.5-gallon fuel tank.

# L3301/L3901/L4701

## MANEUVERABILITY

*The Standard L series gives you more of what compact tractors should provide.*



### Bevel Gear Front Axle (4WD model)

A superior feature that delivers an extremely tight turning radius with full power transfer to the wheels at every steering angle.

### Wet-Disc Brakes

Responsive and smooth, our long-life, multi-plate wet-disc brakes are immersed in oil, and require only the slightest foot pressure to activate.

### Smooth Power Steering

To reduce fatigue, both 2-wheel drive and 4-wheel drive models come equipped with smooth, easy-turn power steering.

### Choice of Tires

Tires designed for specific jobs allow the Standard L-Series tractors to perform even better. Select from AG, Industrial, and Turf.



# L3301/L3901/L4701

## COMFORT

*The Standard L-Series brings more comfort to hard work, with a spacious and ergonomic operator layout, suspension seat and more.*



### Spacious Operator's Deck

To provide maximum comfort, the Standard L-Series features a spacious operator platform. Its flat\* design also makes getting on and off the tractors easier.

*\*semi-flat deck on L3301/L3901*



### New Seat

The adjustable seat suspension offers a high level of comfort. The seat is contoured and ergonomically designed to help reduce operator fatigue when working long days. A drain hole has been added to allow water to escape so it does not accumulate on the seat.



### New Dash Panel

The dash panel features large gauges and a digital LCD panel that provide vital information including engine error codes and a parking brake indicator.

### Sleek Design

The Standard L-Series' sleek slanted hood provides a great field of vision. This comes in handy for front loader work. Multiple headlamps are useful in dark and inclement conditions. Additionally, the one-piece hood can be fully opened for easier access to the engine and other maintenance items.

### Cup/Mug Holder

This convenient holder securely fits a cup or a mug to keep operators hydrated while on the job.

### Tool Box

A large toolbox is located right behind the operators seat for easy access. Models with the backhoe will have the toolbox above the left fender, next to the operators seat.



### Roll-Over Protective Structure (ROPS)

For maximum protection, all models come with a foldable ROPS and a retractable seat belt as standard equipment.



# L3301/L3901/L4701

## IMPLEMENTS

**Maximize Standard L-Series' versatility with Kubota's Performance-Matched quick attach/detach implements.**

### LA525 and LA765 Front Loaders

The LA525 and LA765 Front Loaders have a specially designed curved boom that can handle the big tasks that the Standard L-Series is made for, providing improved lifting power and height as well as exceptional durability.



**ASSEMBLED  
IN  
GEORGIA**

### Loaders Specifications

MODEL	LA525	LA765
2 Lever Quick Coupler	OPT	STD
Matching Tractor	L3301/L3901	L4701
Maximum Lift Height (Pivot pin)	in.(mm) 94.3 (2394)	105.2 (2673)
Clearance w/Attachment Dump	in.(mm) 76.2 (1936)	81.2 (2063)
Reach @ Maximum Height	in.(mm) 25.4 (645)	21.1 (537)
Maximum Dump Angle	deg. 40	41
Reach w/Attachment on Ground	in.(mm) 63.7 (1618)	70.2 (1783)
Maximum Rollback Angle	deg. 31	27
Digging Depth	in.(mm) 6.9 (176)	6.1 (156)
Overall Height in Carry Position	in.(mm) 51.3 (1302)	54.6 (1387)

\* Measures taken with Quick Coupler.

### BH77 and BH92 Backhoes

The BH77 and BH92 Backhoes are "Performance-Matched" with the L3301, L3901 and L4701 to deliver more power and greater capacity. And, thanks to the full-flat deck, the backhoes deliver optimal legroom for maximum operator comfort.



### Backhoes Specifications

MODEL	BH77	BH92
Matching Tractor	L3301/L3901	L4701
Transport height	in. (mm) 80.3 (2040)	100.1 (2544)
Stabilizer spread transport	in. (mm) 51.8 (1315)	69.2 (1758)
Ground clearance	in. (mm) 11.5 (292)	14.2 (360)
Digging depth, 2ft. flat bottom	in. (mm) 89.8 (2280)	106.1 (2695)
Loading height	in. (mm) 65.7 (1669)	90.6 (2300)
Reach from swing pivot	in. (mm) 124.3 (3156)	149.6 (3801)
Swing pivot to rear axle center line	in. (mm) 37.6 (954)	40.9 (1040)
Bucket rotation	deg. 180	180
Stabilizer spread operating	in. (mm) 69.0 (1753)	93.3 (2369)

# L3301/L3901/L4701

## VERSATILE APPLICATIONS



Pallet Forks



Rear Snow Blower



3-Point Bale Spear



Rotary Tiller



Rear Rotary Cutter



Rear Blade

# SPECIFICATIONS

Model	L3301			L3901			L4701			
	Gear-Drive Transmission		HST	Gear-Drive Transmission		HST	Gear-Drive Transmission		HST	
	2WD	4WD	4WD	2WD	4WD	4WD	2WD	4WD	4WD	
<b>Engine</b>										
Type	Direct injection, vertical, water-cooled 4-cycle diesel									
Engine gross power*	HP (kW)	33.0 (24.6)			37.5 (28.0)			47.3 (35.2)		
Engine net power**	HP (kW)	31.4 (23.4)			36.3 (27.1)			44.8 (33.4)		
PTO power	HP (kW)	27.7 (20.7)	26.2 (19.5)	32.1 (23.9)	30.6 (22.8)	39.3 (29.3)	37.8 (28.2)			
No. of cylinders	3						4			
Bore & stroke	in. (mm)	3.4 x 4.0 (87 x 102.4)								
Total displacement	cu. in. (cm <sup>3</sup> )	111.4 (1826)						148.5 (2434)		
Rated speed	rpm	2700						2600		
Battery	12V, RC: 110 min, CCA: 580 A						12V, RC: 120 min, CCA: 600 A			
Alternator	12V, 40A									
Fuel tank capacity	US gal. (ℓ)	11.1 (42)						13.5 (51)		
<b>PTO</b>										
Rear PTO type	Transmission driven with overrunning clutch		Live - with overrunning clutch	Live-continuous running		Live - with overrunning clutch	Live-independent hydraulic PTO with PTO brake, wet clutch			
PTO/Engine speed	540/2430		540/2580	540/2425		540/2580	540/2475		540/2640	
<b>Hydraulic</b>										
Lift control type	Position control									
Pump capacity (main)	gpm (ℓ/min)	6.3 (23.9)			6.3 (23.9)			7.8 (29.4)		
(PS)	gpm (ℓ/min)	3.8 (14.5)			3.8 (14.5)			4.7 (17.9)		
3-point hitch	Category I									
Lift capacity at lift points	lbs. (kg)	1985 (900)						2870 (1300)		
24 in. behind lift points	lbs. (kg)	1433 (650)						2320 (1053)		
System pressure	kgf/cm <sup>2</sup> (MPa)	165 (16.2)						180 (17.7)		
<b>Traveling System</b>										
Transmission	Gear shift with synchronized shuttle, 8 forward and 8 reverse		Hydrostatic transmission, 3 range speed	Gear shift with synchronized shuttle, 8 forward and 8 reverse		Hydrostatic transmission, 3 range speed	Constant mesh with synchronized shuttle, 8 forward and 8 reverse		Hydrostatic transmission, 3 range speed	
Steering	Integral type power steering						Hydrostatic power steering			
Brake	Mechanical, wet disc type									
Clutch	Dry type single stage			Dry type dual stage		Dry single		Dry type single stage		No clutch
<b>Tire size</b>										
AG Standard	Front/Rear	5.00 - 15/11.2 - 24	7.2 - 16/11.2 - 24	5.00 - 15/11.2 - 24	7.2 - 16/11.2 - 24	7.5L - 15/14.9 - 24	8.3 - 16/14.9 - 24			
TURF Option	Front/Rear	23 x 8.50-12 13.6-16	25 x 8.50-14/13.6-16	23 x 8.50-12 13.6-16	25 x 8.50-14/13.6-16	27 x 8.50 - 15 44 x 18 - 20	27 x 10.5 / 44 x 18 - 20, 27 x 8.50 - 15 44 x 18 - 20, 305R343LSW / 44 x 18 - 20			
Indust. Option	Front/Rear	N/A	27 x 8.50 - 15/15 - 19.5 R4	N/A	27 x 8.50 - 15/15 - 19.5 R4	N/A	10.0 - 16.5 / 17.5L - 24			
<b>Traveling speed with standard AG tires</b>										
mph (km/h)		Forward 1.1 (1.7) - 13.2 (21.2) Reverse 1.1 (1.7) - 13.1 (21.1)	Forward 0.0 (0.0) - 14.1 (22.7) Reverse 0.0 (0.0) - 12.7 (20.5)	Forward 1.1 (1.7) - 13.2 (21.2) Reverse 1.1 (1.7) - 13.1 (21.1)	Forward 0.0 (0.0) - 14.1 (22.7) Reverse 0.0 (0.0) - 12.7 (20.5)	Forward 1.4 (2.2) - 14.9 (24.0) Reverse 1.3 (2.1) - 14.3 (23.0)	Forward 0.0 (0.0) - 15.8 (25.4) Reverse 0.0 (0.0) - 14.2 (22.9)			
<b>Dimensions</b>										
Overall length (w/o 3P)	in. (mm)	110.6 (2810)	107.9 (2740)	110.6 (2810)	107.9 (2740)	122.8 (3120)	119.5 (3035)			
Overall width (min. tread)	in. (mm)	55.1 (1400)						62.4 (1585)		
Overall height (w/Foldable ROPS)	in. (mm)	91.7 (2330)								
Wheelbase	in. (mm)	63.3 (1610)						72.8 (1850)	72.6 (1845)	
Min. ground clearance	in. (mm)	13.6 (345)	13.4 (340)	13.6 (345)	13.4 (340)	15.2 (385)				
<b>Tread</b>										
Front tire	in. (mm)	41.3 (1050)	43.1 (1095)	41.3 (1050)	43.1 (1095)	50.4 (1280) 54.3 (1380) 58.3 (1480) 62.2 (1580)	45.5 (1155)			
Rear tire	in. (mm)	43.8 (1115) / 47.1 (1195) / 50.8 (1290)						46.5 (1180), 47.2 (1200), 51.2 (1300), 57.1 (1450), 60.8 (1545)		
Min. turning radius (w/brake, 4WD disengaged)	feet (m)	7.9 (2.4)	8.2 (2.5)	7.9 (2.4)	8.2 (2.5)	8.9 (2.7)	8.5 (2.6)			
<b>Weight (with ROPS)</b>	lbs. (kg)	2557 (1160)	2734 (1240)	2778 (1260)	2590 (1175)	2767 (1255)	2778 (1260)	3219 (1460)	3296 (1495)	3307 (1500)

\* SAE J1995

\*\* SAE J1349

The company reserves the right to change the above specifications without notice. This brochure is for descriptive purposes only. Please contact your local Kubota dealer for warranty information. For your safety, KUBOTA strongly recommends the use of a Rollover Protective Structure (ROPS) and seat belt in almost all applications.

©2013 Kubota Corporation



## KUBOTA TRACTOR CORPORATION

Kubota Tractor Corporation, 3401 Del Amo Boulevard, Torrance CA 90503  
 Western Division: 1175 S. Guild Ave., Lodi, CA 95240 Tel (209) 334-9910  
 Central Division: 14855 FAA Boulevard, Fort Worth, TX 76155 Tel (817) 571-0900  
 Northern Division: 6300 at One Kubota Way, Groveport, OH 43125 Tel (614) 835-1100  
 Southeast Division: 1025 Northbrook Parkway, Suwanee, GA 30024 Tel (770) 995-8855

Visit our web site at: [www.kubota.com](http://www.kubota.com)

