

[Home](#) ▶ [Equipment](#) ▶ [Loaders](#) ▶ [Skid-Steer Loaders](#) ▶ [S590](#)

S590 Skid-Steer Loader



Tackle bigger projects and cut down working hours with the Bobcat® S590 skid-steer loader.

- Premium operator comfort
- Leading visibility
- Powerful hydraulic performance
- Lift more and outperform the competition

Get 0% financing for up to 24 months* or in lieu of financing, select-model rebates of up to \$1,100 USD*/\$1,400 CAD*.

[Build & Quote](#)

[Contact Dealer](#)

[View Offers](#)

[Find Dealer](#)

[Download Brochure](#)



S590 Overview

- Bobcat engines meet Tier 4 regulations without a diesel particulate filter (DPF), reducing downtime that occurs for DPF regeneration and reducing maintenance costs.
- Spend less time traveling across a jobsite or between jobs with the optional 2-Speed Travel. Move faster – and get the job done sooner – with this time-saving feature.
- Control your S590 using an app on your iOS smartphone. This system functions as an extra set of hands when help is limited, allowing quick two-person jobs to be handled by a single operator. It also enables operators to avoid repeated trips in and out of the cab.

Bobcat M3-Series Compact Track and Skid-Steer Loaders Walk-Around



S590 Specs & Compare

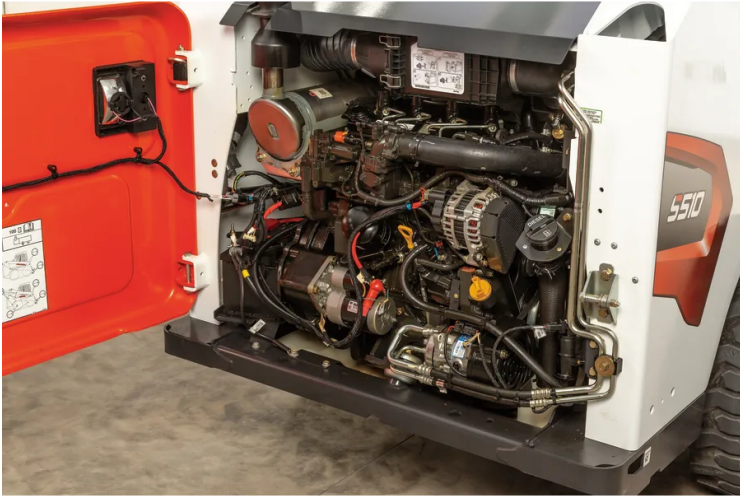
[Show less](#)

S590 Features & Benefits

[Collapse all](#) ▾

Performance 9**State-of-the-art, Non-DPF Engine**

Bobcat engines meet Tier 4 regulations without a diesel particulate filter (DPF). This reduces downtime that occurs with DPF regeneration and minimizes long-term DPF maintenance costs. M3-Series loaders are designed to deliver more usable horsepower, so you can work quicker, lift more and outperform the competition.

[Learn More](#)**Powerful Hydraulic Performance**

Bobcat loaders deliver the right amount of power to each component. That directly translates to more power and balanced performance. Each component - including the engine, pumps, and hydraulic system - is engineered to deliver maximum hydraulic performance. For you, that means faster cycle times and better job-site productivity.

[Learn More](#)**Selectable Joystick Control System**

With Bobcat® Selectable Joystick Controls (SJC), available on most loader models, the power is in your hands. They're the most advanced joysticks on the market, engineered and built with technology and features to help you run your machine and attachments more efficiently than ever. No other joysticks in the industry come close to delivering this level of customization and control you'll find with SJC. Our system lets you control your loader and attachments easily and comfortably. They're loaded with many Bobcat-exclusive features.

[Learn More](#)**Standard Control Systems**

With Bobcat Standard Controls, operators control the drive functions with dual steering levers and manage the loader lift and tilt with dual foot pedals.



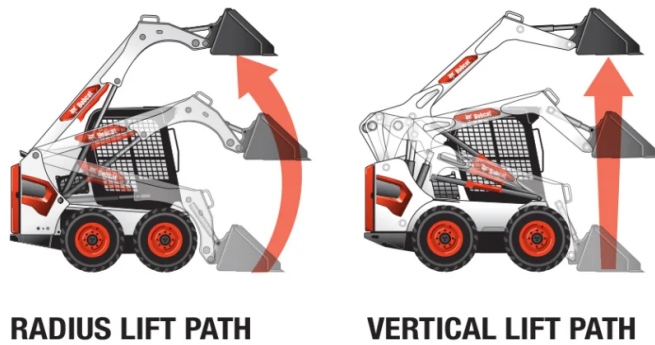
Automatic Ride Control

Automatic ride control reduces material spillage, allowing you to travel at faster speeds across rough terrain. Thanks to its dampening effect, the option also increases operator comfort by offering a smoother ride.



Job-Matched Lift Arms

With two lift path options, M3-Series loaders have you covered. Vertical-lift-path machines provide more reach at full lift height, while radius-lift-path models offer maximum reach at truck bed height.



Remote Control

All loaders that are equipped with Selectable Joystick Control (SJC) can be operated by a remote-control system, so you can operate the machine without an operator in the cab. The remote control is completely portable. If you have multiple machines, you can quickly remove the remote from one machine and attach it to another in minutes.



MaxControl Remote Operation

Control your Bobcat loader from outside the cab, using an app on your iOS smartphone. This system functions as an extra set of hands when help is limited, allowing two-person jobs to be handled by a single operator. It also enables operators to avoid repeated trips in and out of the cab.



[Learn More](#)

Quicker Turning

When not carrying a load, Bobcat skid-steer loaders deliver balanced, easy turning for ideal performance. Our skid-steer loaders offer effective turning and skidding; reduced fuel consumption and power requirements; increased drive train and tire life; and less wear and tear.

Comfort 5

Leading Visibility

Bobcat skid-steer loader and compact track loader cabs are designed for all-around visibility. As you grade next to a building or load the machine on a trailer, you'll gain optimal sight lines for easier operation. View the bucket corners from your seat and easily see the cutting edge. Your tracks or tires are visible without raising the loader arms. A large top window gives you visibility while dumping material into a high-sided truck.



Adaptable Controls

Intuitive and adaptable controls on Bobcat skid-steer and compact track loaders make it easy for operators to be as productive as possible. Whether your job requires a fine touch working close to walls and obstacles or quick, responsive work group action and maneuverability, Bobcat gives you the ability to choose the best controls for the task. When paired with SJC controls, the engine speed can be controlled with the operator's foot, while fingertip controls simplify the operation of soil conditioners, sweepers, tillers, buckets and other attachments. Foot pedals can also be adjusted to your preferences.



Pressurized Enclosed Cab

Bobcat loaders with enclosed cabs feature a best-in-class, pressurizing front door seal that repels dust and keeps clean, heated or air-conditioned air inside, for maximum comfort.



Hydraulically Cushioned Cylinders

Smooth, quick Bobcat lift cylinders softly lower the lift arms back to their original position on the loader frame. This occurs automatically with every lift cycle to reduce noise and increase comfort during operation.



Seat Adjustment

Adjustable seats on our skid-steer loaders and compact track loaders set the standard for comfort. No matter your height, it's easy to find a comfortable operating position with multiple adjustment points.



Uptime Protection ⁵

Protected Loader Components

Jobsite hazards are everywhere and when your machine is out of operation for repairs, you lose time and money. With Bobcat skid-steer loaders and compact track loaders, you're ready for nearly anything that you'll encounter. Each component is designed for reliable protection. That means peace of mind, no matter the conditions of your jobsite.



Protection Technology

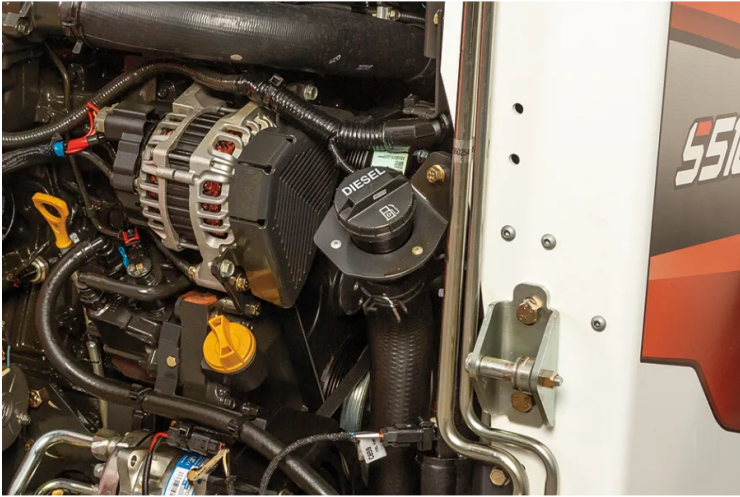
Every skid-steer and compact track loader is engineered with multiple protection technologies. Working together, they shield your machine and minimize the risk of failure. For you, that means better reliability and the confidence to do your work.

Cold Weather Engine Protection

Bobcat diesel engines are engineered to guard against the damaging effects of extremely cold weather. They prevent premature wear by automatically increasing the idle speed (rpm) to warm up oil and set a maximum operating speed (rpm) to prevent premature component wear or failure. Depending on the engine oil temperature, the protection may activate for several seconds to a few minutes.

Innovative Fuel System

The innovative fuel system includes a variety of features that make maintenance and service more convenient. The fuel pump enables a self-priming system that continuously forces air out of the low-pressure fuel system and back into the fuel tank, eliminating the need for a primer bulb. The low-pressure fuel system also incorporates a fuel pressure sensor to continuously monitor the low-pressure fuel circuit and notify the operator of a plugged fuel filter. This makes it easier on for operators if the fuel tank runs empty or if changing the fuel filter.



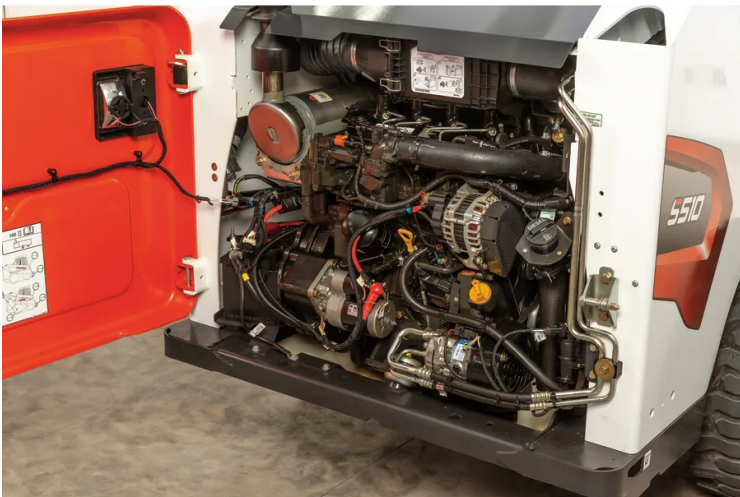
Maintenance-Free Chaincase

Many brands will tout the ability to adjust their loaders' drive chains. These periodic adjustments cost you time, productivity and money. Bobcat has offered a better way for years with its skid-steer loaders: No adjustments. Bobcat welds its axle tubes to the loader chaincase. This, along with tight tolerance chain placement, eliminates the need for adjustments. So instead of spending time in the shop, you can spend time on the job with Bobcat skid-steer loaders.

Serviceability ⁵

Full-Access Serviceability

No other loader matches the serviceability of Bobcat skid-steer loaders and compact track loaders. Our large, swing-open tailgate provides convenient access to routine maintenance points. Unlike other brands, there are no radiators to move, lift arms to raise or lift-arm support devices to install in order to service the machine. Spend your time completing maintenance work rather than struggling to gain access.



Transverse Engine & Belt Drive

Bobcat loaders offer one-sided serviceability thanks to the exclusive belt-drive system. This durable technology with a multi-groove Kevlar™ belt allows your loader engine to run slower for reduced noise and increased durability. It's also more efficient with an optimized engine-to-pump package.

Easy Grease Point Access

Maintenance is easier and faster with easy-to-access grease zerk locations on critical pivot points. With Bobcat compact loaders, there's no need to lay on the ground or stand on tracks or tires to access grease points.



Transverse Engine & Belt Drive

Bobcat loaders offer one-sided serviceability thanks to the exclusive belt-drive system. This durable technology with a multi-groove Kevlar™ belt allows your loader engine to run slower for reduced noise and increased durability. It's also more efficient with an optimized engine-to-pump package.

Hydraulic Oil Site Gauge

Check your hydraulic oil level quickly and easily as you walk by your machine. Keep an eye on hydraulic oil levels and simplify your daily checks.



Versatility ⁴

Attachment Versatility

Our attachments help you do much more than dig. Bobcat offers attachment versatility across carriers combined with unbeatable attachment support from the Bobcat dealer network.



Bob-Tach Attachment System

Change attachments quickly and easily using the time-tested standard Bob-Tach mounting system included with every loader, or upgrade to the Power Bob-Tach system - available on select models - for swapping non-hydraulic attachments without leaving your seat.



Power Bob-Tach System

Quickly swap non-hydraulic attachments without leaving your seat using the Bob-Tach attachment mounting system available on select models. And for hydraulic attachments, all you need to do is hook up the hoses after you have secured the attachment. Using the Power Bob-Tach mounting system is fast and easy. After lining up your attachment, simply press a switch inside the cab to engage the wedges into the attachment. They lock into place and keep the attachment secure.



Deluxe Instrumentation

Deluxe Instrumentation brings upgraded communication, monitoring, productivity and control to your Bobcat skid-steer loader or compact track loader. It monitors key loader functions, communicates alerts and provides additional attachment information to track usage.

S590 Attachments

[View All Attachments >](#)


Bucket - Grading, X-Change, Class 4, 36"

Grading buckets feature a smooth lip for finish grading, cleaning ditches, backfilling and leveling.

[View Attachment >](#)


Bucket - Trenching, 12" (Pin-On)

Dig narrow, deep trenches while maintaining excellent breakout force and fast cycle times.

[View Attachment >](#)


Bucket - Trenching, 9" (Pin-On)

Dig narrow, deep trenches while maintaining excellent breakout force and fast cycle times.

[View Attachment >](#)

Related Models

[View All Skid-Steer Loaders >](#)

M2-SERIES



S70

Horsepower	23.5 hp
Rated Operating Capacity (ISO)	760 lb
Operating Weight	2892 lb

[View Model >](#)

M3-SERIES



S450

Horsepower	49 hp
Rated Operating Capacity (ISO)	1370 lb
Operating Weight	5370 lb

[View Model >](#)

M3-SERIES



S510

Horsepower	
Rated Operating Capacity (ISO)	
Operating Weight	

[View Model >](#)

*The prices advertised are suggested resale prices that Bobcat recommends to dealers for purposes of trying to ensure that Bobcat's products are price-competitive and that dealers have the proper incentives to market and service the products in accordance with Bobcat's brand standards. Bobcat reserves the right to change suggested resale prices, product specifications, and options at any time. The final sales price is determined independently by the selling dealer in its sole discretion. Pricing is country specific. Bobcat's suggested list prices are for products sold in the US only. Product configuration may differ from image(s) provided. See dealer for full product details.

*Offer ends 8/31/2023. Available at participating and eligible dealers only. Offer may vary by product type, series, model and select units in dealer's current inventory. Must take delivery from dealer stock by 8/31/2023. Offers available on new equipment in US and Canada only. Some restrictions apply. Length of contract and rate may vary. Monthly payment subject to change. Prior purchases not eligible. See dealer for details. Financing provided on approval of credit by authorized Bobcat finance providers to well-qualified buyers. All finance programs and rates are subject to final approval by the applicable Bobcat finance provider and are subject to change at any time without notice. Administrative fees may apply. Offer not available to government accounts, national accounts and municipal/utility bid customers. Bobcat Company reserves the right to extend or discontinue any of these programs at any time without prior notice.



WARNING: This product can expose you to chemicals including engine exhaust (including diesel engine exhaust when equipped), lead and lead compounds, mineral oils, soots, phthalates, and carbon monoxide which are known to the State of California to cause cancer and birth defects or other reproductive harm. For more information go to www.P65Warnings.ca.gov.

Certain specification(s) are based on engineering calculations and are not actual measurements. Specification(s) are provided for comparison purposes only and are subject to change without notice. Specification(s) for your individual equipment will vary based on normal variations in design, manufacturing, operating conditions, and other factors.

[BUYING TOOLS](#)
[BUILD & QUOTE](#)
[SEARCH INVENTORY](#)
[FIND A DEALER](#)
[SPECIAL OFFERS](#)
[BUYING RESOURCES](#)
[LOADERS](#)
[EXCAVATORS](#)
[TRACTORS](#)
[UTILITY VEHICLES](#)
[ABOUT US](#)
[BRAND](#)
[INNOVATION](#)
[COMMUNITY](#)
[PEOPLE](#)
[REGION SELECTOR](#)
[NORTH AMERICA \(EN\)](#)
[EMAIL SIGN-UP](#)

[REQUEST A DEMO](#)
[CONTACT A DEALER](#)

[CONTACT US](#)
[CUSTOMER SERVICE](#)
[WEBSITE FEEDBACK](#)
[DEALER OPPORTUNITIES](#)
[GOVERNMENT SALES](#)
[FREQUENTLY ASKED QUESTIONS](#)

[TELEHANDLERS](#)
[TOOLCAT UTILITY WORK MACHINES](#)
[ATTACHMENTS](#)

[LEGAL](#)
[PRIVACY POLICY](#)
[TERMS & CONDITIONS](#)
[RECALLS](#)

[BOBCAT STORIES](#)
[AMBASSADORS](#)

One Tough Animal.      



Bobcat Company is a member of the Doosan Group. Doosan is a global leader in construction, grounds maintenance and material handling equipment, power and water solutions, and engineering that has proudly served customers and communities for more than a century.

Bobcat®, the Bobcat logo, the colors of the Bobcat machine and various other product names referenced on this website are trademarks of Bobcat Company in the United States and various other countries.

©2023 Bobcat Company. All rights reserved.