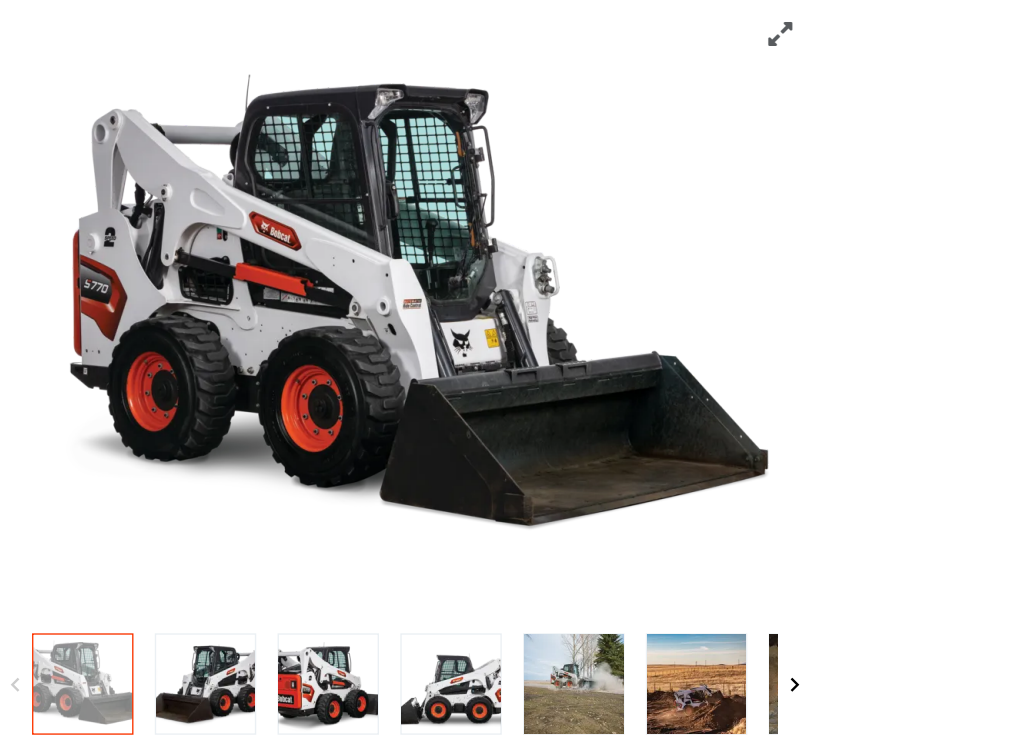


[Home](#) ▶ [Equipment](#) ▶ [Loaders](#) ▶ [Skid-Steer Loaders](#) ▶ S770

# S770 Skid-Steer Loader



The Bobcat® S770 skid-steer loader is loaded with performance and comfort features that can't be matched by other machines in the same size class.

- Maximum headroom and legroom
- Operator-friendly controls
- Powerful hydraulics
- Superior lift arms
- Panoramic serviceability

**Pay as low as 0% financing for up to 24 months\* or choose rebates up to \$1,300 USD\*/\$1,700 CAD\* on Bobcat S770 skid-steer loaders.**

[Build & Quote](#)

[Contact Dealer](#)

[View Offers](#)

[Find Dealer](#)

[Download Brochure](#)



## S770 Overview

- The 92-hp Bobcat® S770 skid-steer loader delivers powerful hydraulics, fast cycle times and leading comfort for all-day operations.
- The pressurized cab is engineered for long days on the jobsite with low noise levels, easy-to-reach, intuitive controls and tall, wide windows that provide an optimal glass-surface area for high visibility.
- With the optional Selectable Joystick Control, you can operate the S770 via remote control. Bobcat MaxControl Remote Operation is a like an extra set of hands when help is limited. Two-person jobs can be managed by one worker, and you can say goodbye to unnecessary trips in and out of the cab.

Bobcat M3-Series Compact Track and Skid-Steer Loaders Walk-Around

A large rectangular area containing a YouTube video player. The video player has a red play button in the center. The video title is "Bobcat M3-Series Compact Track and Skid-Steer Loaders Walk-Around".

## S770 Specs & Compare

[Show less](#)

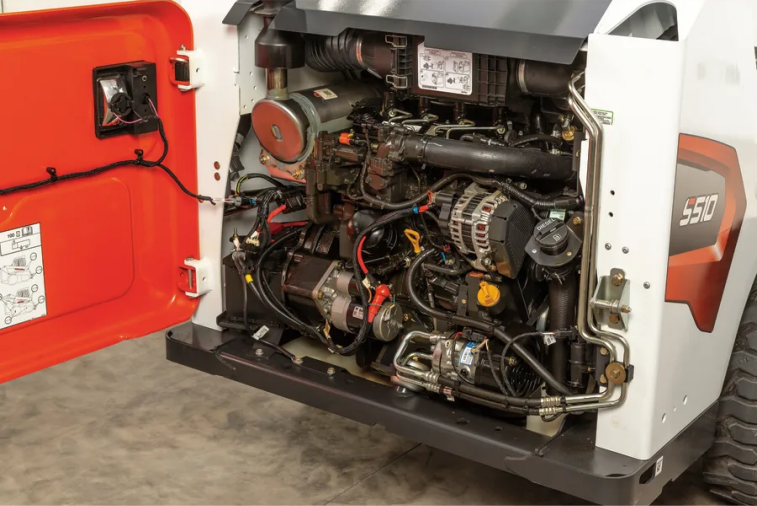
# S770 Features & Benefits

Collapse all

Performance 14

State-of-the-art, Non-DPF Engine

Bobcat engines meet Tier 4 regulations without a diesel particulate filter (DPF). This reduces downtime that occurs with DPF regeneration and minimizes long-term DPF maintenance costs. M3-Series loaders are designed to deliver more usable horsepower, so you can work quicker, lift more and outperform the competition.



Learn More

Powerful Hydraulic Performance

Bobcat loaders deliver the right amount of power to each component. That directly translates to more power and balanced performance. Each component - including the engine, pumps, and hydraulic system - is engineered to deliver maximum hydraulic performance. For you, that means faster cycle times and better job-site productivity.



Learn More

Selectable Joystick Control System

With Bobcat® Selectable Joystick Controls (SJC), available on most loader models, the power is in your hands. They're the most advanced joysticks on the market, engineered and built with technology and features to help you run your machine and attachments more efficiently than ever. No other joysticks in the industry come close to delivering this level of customization and control you'll find with SJC. Our system lets you control your loader and attachments easily and comfortably. They're loaded with many Bobcat-exclusive features.



Learn More

Standard Control Systems

With Bobcat Standard Controls, operators control the drive functions with dual steering levers and manage the loader lift and tilt with dual foot pedals.





**Durable Undercarriage System**

You won't find a tougher track system on the market. Every component is engineered for lasting durability, including steel imbed tracks, forged steel idlers and solid-mounted drive motors and hydraulic hoses. The undercarriage system for Bobcat® loaders also delivers a better-quality ride and simple maintenance.



[Learn More](#)

**2-Speed Travel**

The 2-Speed travel option boosts your top travel speed. Reduce your travel time across jobsites, limit the need to load and unload your machine on a trailer and shorten your long-haul tasks.



**Job-Matched Lift Arms**

With two lift path options, M3-Series loaders have you covered. Vertical-lift-path machines provide more reach at full lift height, while radius-lift-path models offer maximum reach at truck bed height.



**RADIUS LIFT PATH**



**VERTICAL LIFT PATH**

**Remote Control**

All loaders that are equipped with Selectable Joystick Control (SJC) can be operated by a remote-control system, so you can operate the machine without an operator in the cab. The remote control is completely portable. If you have multiple machines, you can quickly remove the remote from one machine and attach it to another in minutes.



**MaxControl Remote Operation**

Control your Bobcat loader from outside the cab, using an app on your iOS smartphone. This system functions as an extra set of hands when help is limited, allowing two-person jobs to be handled by a single operator. It also enables operators to avoid repeated trips in and out of the cab.



[Learn More](#)

**Automatic Ride Control**

Automatic ride control reduces material spillage, allowing you to travel at faster speeds across rough terrain. Thanks to its dampening effect, the option also increases operator comfort by offering a smoother ride.



**Smart Cooling**

Bobcat loaders feature the exclusive SmartFAN that only turns as fast as needed. The patented design cools more efficiently, while the radiator and hydraulic oil cooler are protected from jobsite hazards. Additionally, Bobcat offers an optional automatic reversing fan which clears debris from the radiator screen while you're working in dirty environments.



**Deluxe Instrumentation**



Deluxe Instrumentation brings upgraded communication, monitoring, productivity and control to your Bobcat® skid-steer loader or compact track loader. It monitors key loader functions, communicates alerts and provides additional attachment information to track usage.



**Effective Weight Balance**

When not carrying a load, Bobcat skid-steer loaders offer a weight distribution of 70 percent in the rear and 30 percent in the front for balanced, easy turning and ideal performance. It offers effective turning and skidding, reduced fuel consumption and power requirements, increased drive train and tire life, and less wear and tear compared to “flat-footed” machines sold by other manufacturers.

**Quicker Turning**

When not carrying a load, Bobcat skid-steer loaders deliver balanced, easy turning for ideal performance. Our skid-steer loaders offer effective turning and skidding; reduced fuel consumption and power requirements; increased drive train and tire life; and less wear and tear.

**Uptime Protection**

**Protected Loader Components**

Jobsite hazards are everywhere and when your machine is out of operation for repairs, you lose time and money. With Bobcat skid-steer loaders and compact track loaders, you’re ready for nearly anything that you’ll encounter. Each component is designed for reliable protection. That means peace of mind, no matter the conditions of your jobsite.



**Protection Technology**

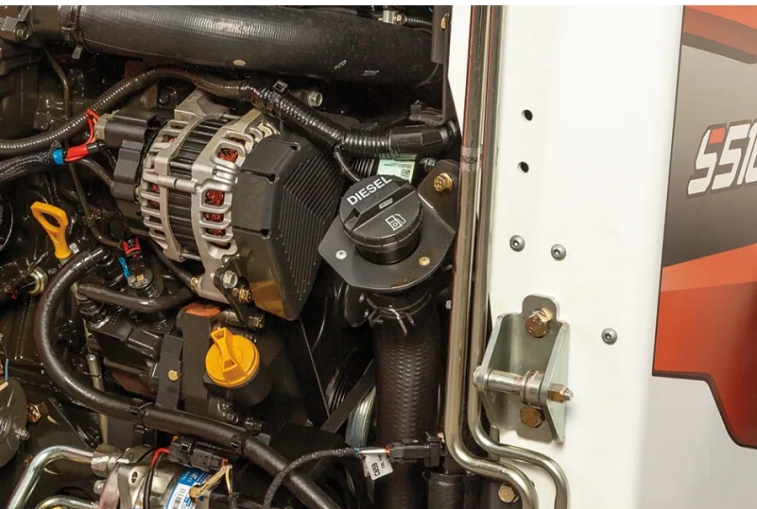
Every skid-steer and compact track loader is engineered with multiple protection technologies. Working together, they shield your machine and minimize the risk of failure. For you, that means better reliability and the confidence to do your work.

**Cold Weather Engine Protection**

Bobcat diesel engines are engineered to guard against the damaging effects of extremely cold weather. They prevent premature wear by automatically increasing the idle speed (rpm) to warm up oil and set a maximum operating speed (rpm) to prevent premature component wear or failure. Depending on the engine oil temperature, the protection may activate for several seconds to a few minutes.

**Innovative Fuel System**

The innovative fuel system includes a variety of features that make maintenance and service more convenient. The fuel pump enables a self-priming system that continuously forces air out of the low-pressure fuel system and back into the fuel tank, eliminating the need for a primer bulb. The low-pressure fuel system also incorporates a fuel pressure sensor to continuously monitor the low-pressure fuel circuit and notify the operator of a plugged fuel filter. This makes it easier onfor operators if the fuel tank runs empty or if changing the fuel filter.



**Simple Machine Tie-downs**

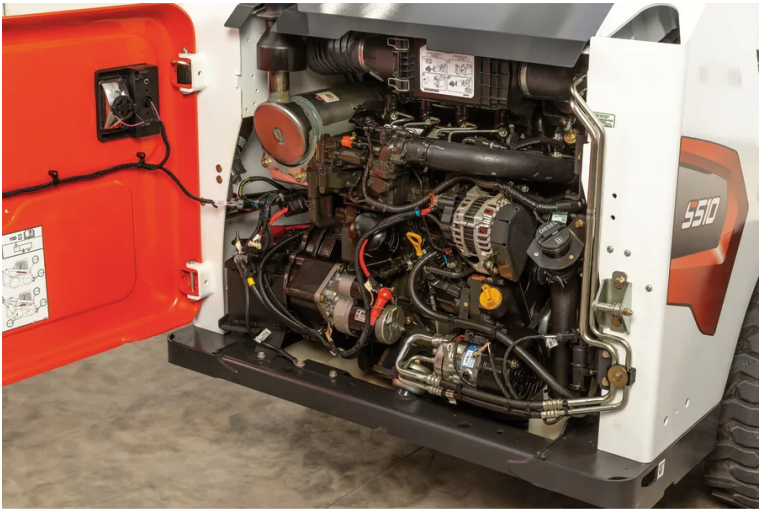
Quickly secure your skid-steer loader or compact track loader without searching for hard-to-reach tie-downs. The tie-downs are easy to locate and use.

**Maintenance-Free Chaincase**

Many brands will tout the ability to adjust their loaders' drive chains. These periodic adjustments cost you time, productivity and money. Bobcat has offered a better way for years with its skid-steer loaders: No adjustments. Bobcat welds its axle tubes to the loader chaincase. This, along with tight tolerance chain placement, eliminates the need for adjustments. So instead of spending time in the shop, you can spend time on the job with Bobcat skid-steer loaders.

Non-DPF Engine

The biggest advantage of our Tier 4 solution is simplicity. Bobcat engines meet Tier 4 regulations without a diesel particulate filter (DPF). This reduces downtime that occurs with DPF regeneration and long-term DPF maintenance costs. That allows operators to focus on working.



Comfort 12

Premium Comfort

When you step in the cab of a Bobcat loader, you'll immediately notice the attention given to operator comfort. A long list of features is included in the cab with a large entry for easy access and more interior space than competitors. Once inside, cab pressurization and an adjustable seat are just the beginning.



[Learn More](#)

Leading Visibility

Bobcat skid-steer loader and compact track loader cabs are designed for all-around visibility. As you grade next to a building or load the machine on a trailer, you'll gain optimal sight lines for easier operation. View the bucket corners from your seat and easily see the cutting edge. Your tracks or tires are visible without raising the loader arms. A large top window gives you visibility while dumping material into a high-sided truck.



Pressurized Enclosed Cab

Bobcat loaders with enclosed cabs feature a best-in-class, pressurizing front door seal that repels dust and keeps clean, heated or air-conditioned air inside, for maximum comfort.





Adaptable Controls

Intuitive and adaptable controls on Bobcat skid-steer and compact track loaders make it easy for operators to be as productive as possible. Whether your job requires a fine touch working close to walls and obstacles or quick, responsive work group action and maneuverability, Bobcat gives you the ability to choose the best controls for the task. When paired with SJC controls, the engine speed can be controlled with the operator’s foot, while fingertip controls simplify the operation of soil conditioners, sweepers, tillers, buckets and other attachments. Foot pedals can also be adjusted to your preferences.



Hydraulically Cushioned Cylinders

Smooth, quick Bobcat lift cylinders softly lower the lift arms back to their original position on the loader frame. This occurs automatically with every lift cycle to reduce noise and increase comfort during operation.



Seat Adjustment

Adjustable seats on our skid-steer loaders and compact track loaders set the standard for comfort. No matter your height, it’s easy to find a comfortable operating position with multiple adjustment points.



Sound Dampening

If you work on a busy jobsite, you know that noise can be a daily frustration. Bobcat® loaders include many sound dampening features that keep your cab quieter.

Adjustable Seat

Adjustable seats on our skid-steer loaders and compact track loaders set new standards for comfort. No matter your height, it’s easy to find a comfortable operating position with multiple adjustment points. With the optional air ride seat, you’ll experience maximum suspension comfort. It adjusts to your weight, helping you smooth out the bumps on your jobsite.



**Maximum Headroom and Legroom**

Bobcat skid-steer loaders and compact track loaders are engineered with large swing-open doors, and a lowered door threshold, which provide ample headroom for exit and entry. Inside, even tall operators will be comfortable with plenty of headroom. Additionally, the swing-open door doesn't take up cab space and can be removed without tools.



**Lift Cylinder Cushioning**

You'll experience smoother arm movements with lift cylinder cushioning. It eliminates the need for manual arm slowing and reduces harsh movements. For you, that means less vibration, quieter operation and increased comfort.

**Simple Machine Tie-downs**

Quickly secure your skid-steer loader or compact track loader without searching for hard-to-reach tie-downs. The tie-downs are easy to locate and use.

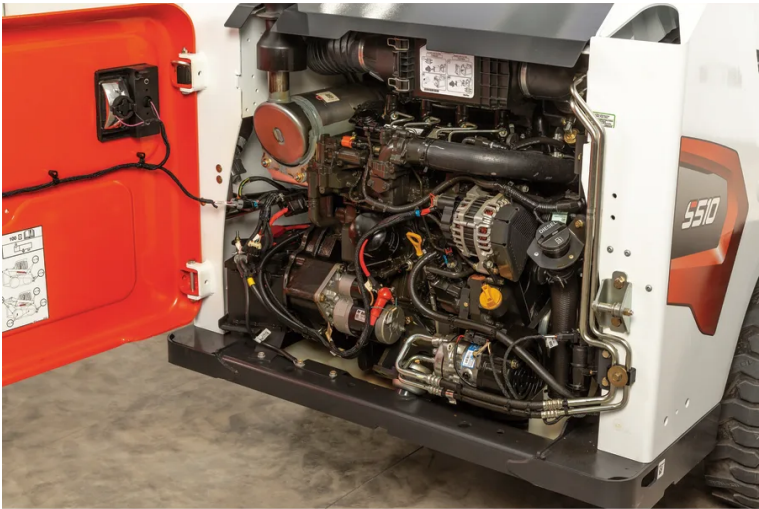
**Operator Comfort**

When you step in the cab of a Bobcat loader, you'll immediately notice the attention given to operator comfort. A long list of features is included in the cab with a large entry for easy access and 20% more interior space than competitors. Once inside, cab pressurization and an adjustable seat are just the beginning.

**Serviceability** 5

**Full-Access Serviceability**

No other loader matches the serviceability of Bobcat skid-steer loaders and compact track loaders. Our large, swing-open tailgate provides convenient access to routine maintenance points. Unlike other brands, there are no radiators to move, lift arms to raise or lift-arm support devices to install in order to service the machine. Spend your time completing maintenance work rather than struggling to gain access.



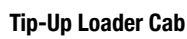
**Transverse Engine & Belt Drive**

Bobcat loaders offer one-sided serviceability thanks to the exclusive belt-drive system. This durable technology with a multi-groove Kevlar™ belt allows your loader engine to run slower for reduced noise and increased durability. It’s also more efficient with an optimized engine-to-pump package.

**Easy Grease Point Access**

Maintenance is easier and faster with easy-to-access grease zerk locations on critical pivot points. With Bobcat compact loaders, there’s no need to lay on the ground or stand on tracks or tires to access grease points.





### Hydraulic Oil Site Gauge

A close-up photograph of the front of a white excavator. The image shows the 'Hydro-Guard' label, which is a rectangular sticker with a green top half and a red bottom half. To the right of the label is a circular pressure gauge with a black face and a yellow needle. The excavator's body is white, and a black hydraulic hose is visible on the left. A black metal grate is at the bottom, and a black hydraulic arm with an orange tip is on the right. The background shows a clear blue sky.

### Attachment Versatility

Power Bob-Tach System

Quickly swap non-hydraulic attachments without leaving your seat using the Bob-Tach attachment mounting system available on select models. And for hydraulic attachments, all you need to do is hook up the hoses after you have secured the attachment. Using the Power Bob-Tach mounting system is fast and easy. After lining up your attachment, simply press a switch inside the cab to engage the wedges into the attachment. They lock into place and keep the attachment secure.



Bob-Dock System

The Bob-Dock™ attachment mounting system enables you to change most hydraulic attachments without stepping outside the cab to remove or connect hoses.

[Learn More](#)

S770 Attachments

[View All Attachments >](#)



Automatic Grade Control Laser

Bobcat® automatic grading solutions deliver more accurate grading results with less time and labor.

[View Attachment >](#)



Automatic Grade Control Sonic Slope - Compact Excavators

Bobcat® automatic grading solutions deliver more accurate grading results with less time and labor.

[View Attachment >](#)






Box Blade - Laser Kit

Designed to make working on slopes grade.

[View Attachment >](#)

Related Models

[View All Skid-Steer Loaders >](#)

| M2-SERIES  | M3-SERIES   | M3-SERIES   |                                |        |                  |         |   |            |       |                                |         |                  |         |  |            |  |                                |  |                  |  |
|--|---|---|--------------------------------|--------|------------------|---------|---|------------|-------|--------------------------------|---------|------------------|---------|--|------------|--|--------------------------------|--|------------------|--|
|   |  |  |                                |        |                  |         |   |            |       |                                |         |                  |         |  |            |  |                                |  |                  |  |
| S70  | S450  | S510  |                                |        |                  |         |   |            |       |                                |         |                  |         |  |            |  |                                |  |                  |  |
| <table><tr><td>Horsepower</td><td>23.5 hp</td></tr><tr><td>Rated Operating Capacity (ISO)</td><td>760 lb</td></tr><tr><td>Operating Weight</td><td>2892 lb</td></tr></table> | Horsepower  | 23.5 hp   | Rated Operating Capacity (ISO) | 760 lb | Operating Weight | 2892 lb | <table><tr><td>Horsepower</td><td>49 hp</td></tr><tr><td>Rated Operating Capacity (ISO)</td><td>1370 lb</td></tr><tr><td>Operating Weight</td><td>5370 lb</td></tr></table> | Horsepower | 49 hp | Rated Operating Capacity (ISO) | 1370 lb | Operating Weight | 5370 lb | <table><tr><td>Horsepower</td><td></td></tr><tr><td>Rated Operating Capacity (ISO)</td><td></td></tr><tr><td>Operating Weight</td><td></td></tr></table> | Horsepower |  | Rated Operating Capacity (ISO) |  | Operating Weight |  |
| Horsepower   | 23.5 hp   |   |                                |        |                  |         |   |            |       |                                |         |                  |         |  |            |  |                                |  |                  |  |
| Rated Operating Capacity (ISO)   | 760 lb  |   |                                |        |                  |         |   |            |       |                                |         |                  |         |  |            |  |                                |  |                  |  |
| Operating Weight   | 2892 lb   |   |                                |        |                  |         |   |            |       |                                |         |                  |         |  |            |  |                                |  |                  |  |
| Horsepower   | 49 hp   |   |                                |        |                  |         |   |            |       |                                |         |                  |         |  |            |  |                                |  |                  |  |
| Rated Operating Capacity (ISO)   | 1370 lb   |   |                                |        |                  |         |   |            |       |                                |         |                  |         |  |            |  |                                |  |                  |  |
| Operating Weight   | 5370 lb   |   |                                |        |                  |         |   |            |       |                                |         |                  |         |  |            |  |                                |  |                  |  |
| Horsepower   |   |   |                                |        |                  |         |   |            |       |                                |         |                  |         |  |            |  |                                |  |                  |  |
| Rated Operating Capacity (ISO)   |   |   |                                |        |                  |         |   |            |       |                                |         |                  |         |  |            |  |                                |  |                  |  |
| Operating Weight   |   |   |                                |        |                  |         |   |            |       |                                |         |                  |         |  |            |  |                                |  |                  |  |



[View Model >](#)

[View Model >](#)

[View Model >](#)

\*The prices advertised are suggested resale prices that Bobcat recommends to dealers for purposes of trying to ensure that Bobcat’s products are price-competitive and that dealers have the proper incentives to market and service the products in accordance with Bobcat’s brand standards. Bobcat reserves the right to change suggested resale prices, product specifications, and options at any time. The final sales price is determined independently by the selling dealer in its sole discretion. Pricing is country specific. Bobcat’s suggested list prices are for products sold in the US only. Product configuration may differ from image(s) provided. See dealer for full product details.

\*Offer ends 12/31/2023. Available at participating and eligible dealers only. Offer may vary by product type, series, model and select units in dealer's current inventory. Must take delivery from dealer stock by 12/31/2023. Offers available on new equipment in US and Canada only. Some restrictions apply. Length of contract and rate may vary. Monthly payment subject to change. Prior purchases not eligible. See dealer for details. Financing provided on approval of credit by authorized Bobcat finance providers to well-qualified buyers. All finance programs and rates are subject to final approval by the applicable Bobcat finance provider and are subject to change at any time without notice. Administrative fees may apply. Offer not available to government accounts, national accounts and municipal/utility bid customers. Bobcat Company reserves the right to extend or discontinue any of these programs at any time without prior notice.



**WARNING:** *This product can expose you to chemicals including engine exhaust (including diesel engine exhaust when equipped), lead and lead compounds, mineral oils, soots, phthalates, and carbon monoxide which are known to the State of California to cause cancer and birth defects or other reproductive harm. For more information go to [www.P65Warnings.ca.gov](http://www.P65Warnings.ca.gov).*

*Certain specification(s) are based on engineering calculations and are not actual measurements. Specification(s) are provided for comparison purposes only and are subject to change without notice. Specification(s) for your individual equipment will vary based on normal variations in design, manufacturing, operating conditions, and other factors.*

BUYING TOOLS

BUILD & QUOTE

SEARCH INVENTORY

FIND A DEALER

SPECIAL OFFERS

REQUEST A DEMO

CONTACT A DEALER

CONTACT US

CUSTOMER SERVICE

WEBSITE FEEDBACK

DEALER OPPORTUNITIES

GOVERNMENT SALES

FREQUENTLY ASKED QUESTIONS

BUYING RESOURCES

LOADERS

EXCAVATORS

TRACTORS

UTILITY VEHICLES

TELEHANDLERS

TOOLCAT UTILITY WORK MACHINES

ATTACHMENTS

LEGAL

PRIVACY POLICY

TERMS & CONDITIONS

RECALLS

ABOUT US

BRAND

INNOVATION

COMMUNITY

PEOPLE

BOBCAT STORIES

AMBASSADORS

REGION SELECTOR

NORTH AMERICA (EN)

EMAIL SIGN-UP

One Tough Animal.



**Bobcat Company is a member of the Doosan Group.** Doosan is a global leader in construction, grounds maintenance and material handling equipment, power and water solutions, and engineering that has proudly served customers and communities for more than a century.

Bobcat®, the Bobcat logo, the colors of the Bobcat machine and various other product names referenced on this website are trademarks of Bobcat Company in the United States and various other countries.

©2023 Bobcat Company. All rights reserved.